



PIPE COUPLINGS

HAMMER UNION - FIGURE 206
SHANK

400 PSI TEST

FEATURES & APPLICATIONS:

- Fig. 206 has a BUNA O-Ring seal added to the male sub, which functions as a secondary seal. Recommended for water, oil and gas applications where working pressures do not exceed 400 PSI NSCWP. Subs and nuts of the Figure 206 union are interchangeable with the Figure 200.

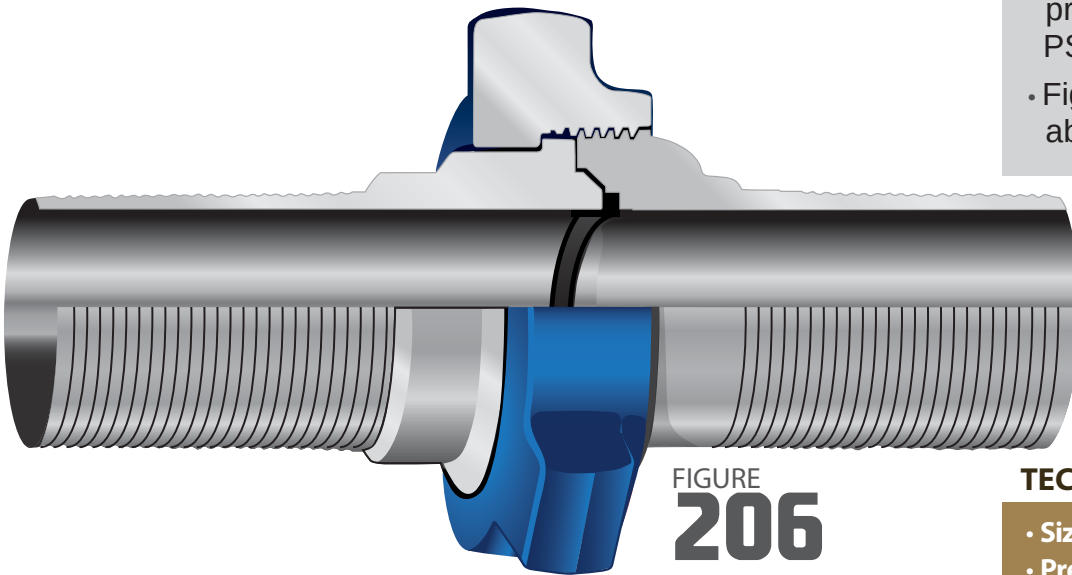


FIGURE
206

TECHNICAL DATA:

- **Sizes:** 1" - 10"
- **Pressure Rating:** 400 PSI NSCWP
- **End Connections:** Threaded, Butt-Weld & Socket Weld.
- **Butt-Weld Schedules:** 40 (Std)
- **BUNA-N O-Ring on Figure 206 male sub** (-20°F to 250°F)
- **Color Code:** Gray Subs / Blue Nut

400 PSI CWP	
SIZE	FIGURE 206
4"	HU206-400S



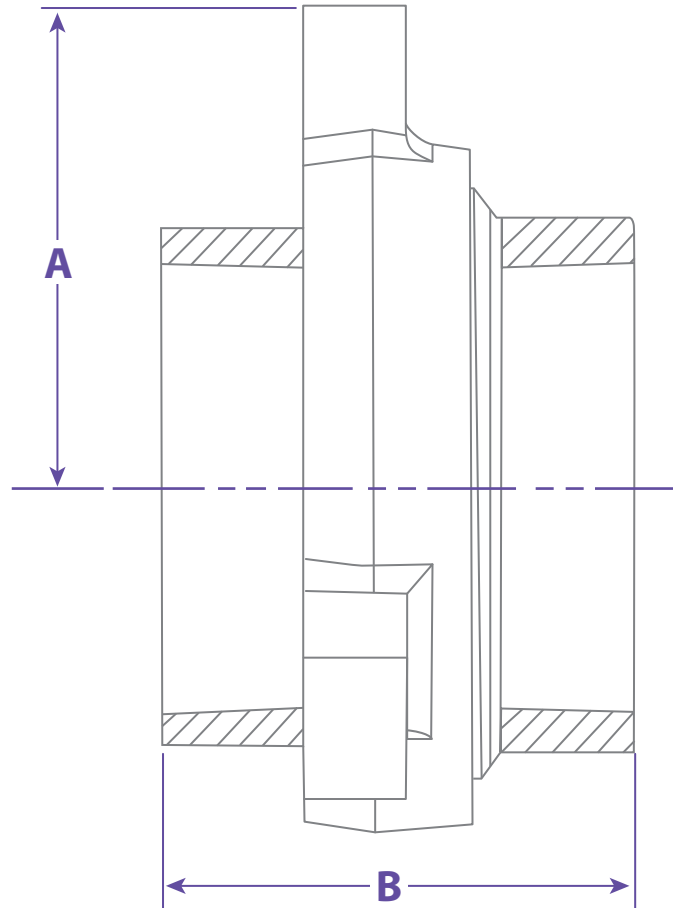
Information contained on this page is for general information purposes only. Seal Fast Inc. assumes no responsibility for errors or omissions for this product.



PIPE COUPLINGS
HAMMER UNION - FIGURE 206

400 PSI TEST

Fig. 206 is a general purpose union.



Size / Weight						MATERIAL		Part #	
IN	Lbs	A	B			NUTS	SUBS		
4"	20.0	4.53	5.08			A105	A105	HU206-400S	

Standard Service			Pipe Size(in)										End Connection
Fig. No.	CWP	Test	1	1 1/4	1 1/2	2	2 1/2	3	4	6	8		
	SUB	Nut											
206	2,000	3,000	✓	✓	✓	✓	✓	✓	✓	✓			T / BW

TITLE PIPE COUPLINGS - HAMMER UNION FIGURE 206

DISCLAIMER

All drawings and specifications are subject to change without notice. Drawings represent general dimensions of our products. Seal Fast cannot guarantee the dimensions of the part will exactly match those in the drawing. This drawing is the property of Seal Fast Inc. Copying or reproduction of this drawing is expressly prohibited.

MATERIAL

Forged Steel, Zinc Plated

DRAWING NOT TO SCALE

PART # HU206-400S